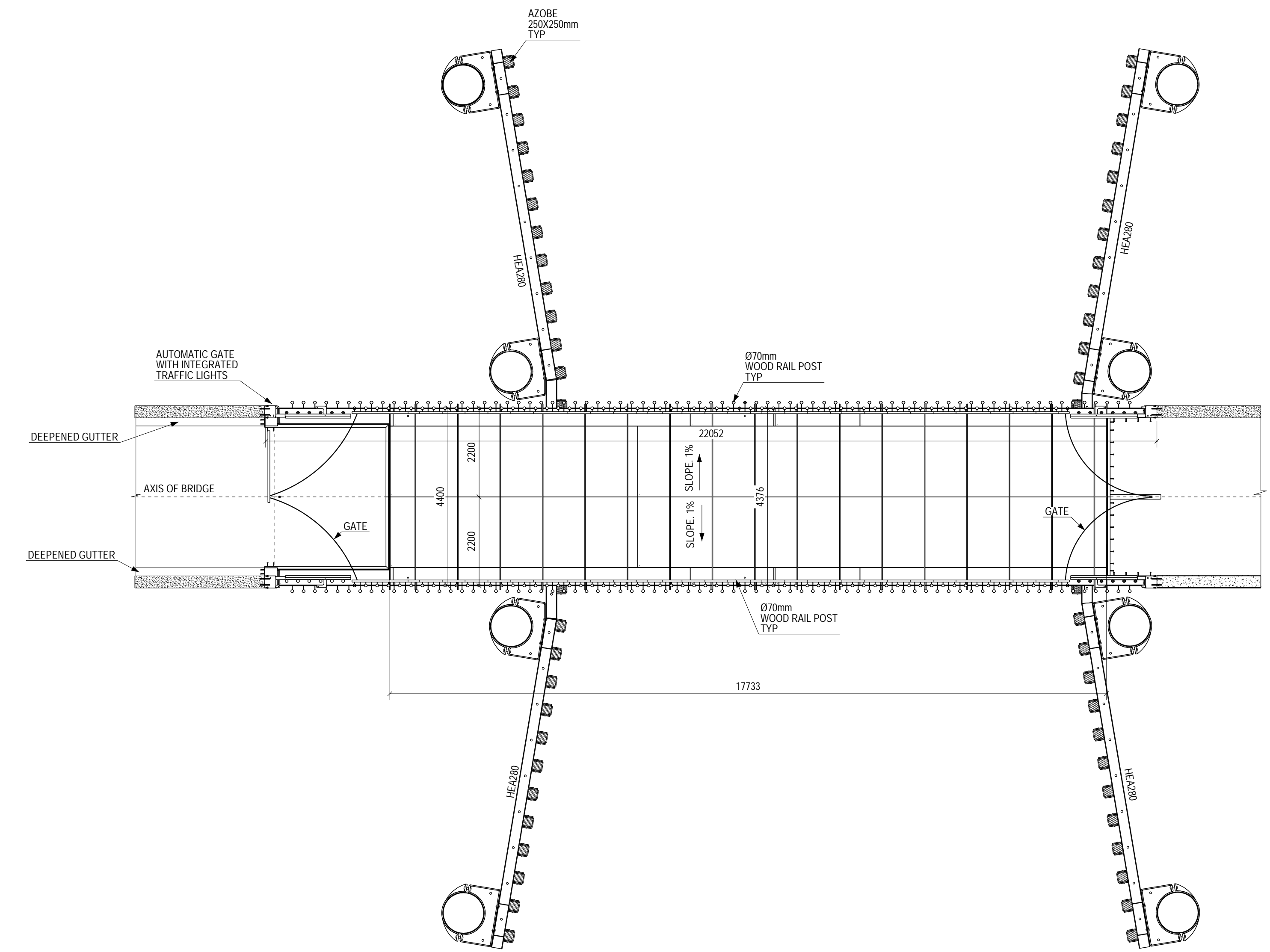
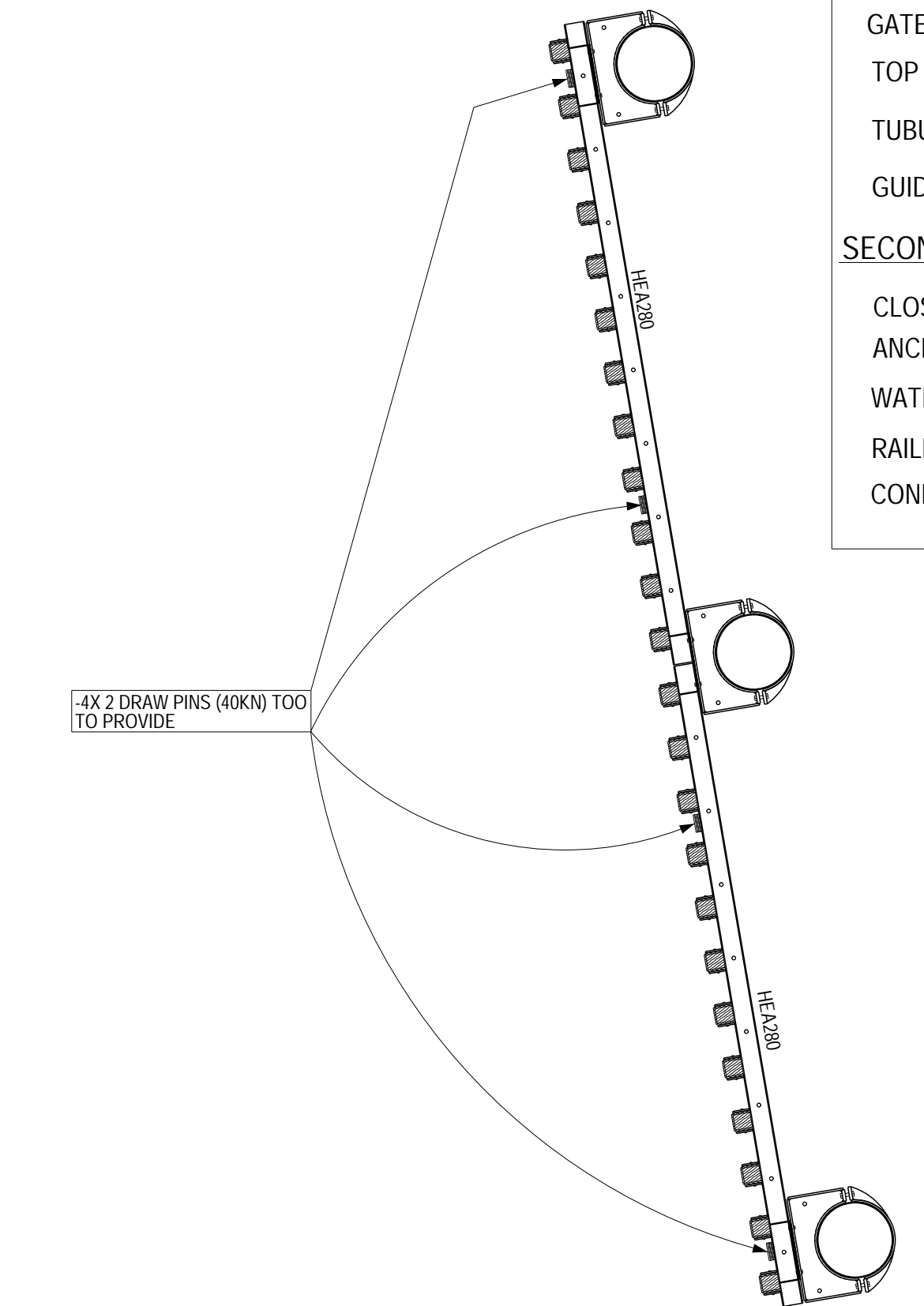


ISOMETRIC VIEW OF BRIDGE



KEY PLAN



CONSERVARION OF THE STEEL PARTS

PART	CATEGORY:SUBSURFACE+SYSTEM	RAL	COLOR
<b>BRIDGE AND GUIDING SYSTEM</b>			
ALL VISIBLE PARTS OF THE BRIDGE, RAILINGS INCLUDED	Im1:shotblasting Sa 3+Metallization +A'8.04PU	RAL 7044	Silk Grey
ANCHORED PROFILES IN PILLAR LEFT BANK	Im1:shotblasting Sa 3+Metallization +A'8.04PU	RAL 7044	Silk Grey
GATES	Im1:shotblasting Sa 3+Metallization +A'8.04PU	RAL 7044	Silk Grey
TOP OF BRIDGE DECK WHERE THE WATERPROOF TOP LAYER WILL BE PUT ON	C4 or C5: shotblasting Sa 2 1/12 + primer		
TUBULAR PIPES UNDER PILLARS LEFT BANK AND RIGHT BANK	Im1:shotblasting Sa 3+Metallization +A'8.04PU	RAL 7044	Silk Grey
GUIDING SYSTEM INCL TUBULAR PIPES AND CONNECTION PROFILES FOR THE WOODEN BEAMS	Im1:shotblasting Sa 3+Metallization +A'8.04PU	RAL 7044	Silk Grey
<b>SECONDARY STEEL</b>			
CLOSING PLATES	Stainless steel: brushed		
ANCHOR PLATE BEARINGS	CSI-C5M:shotblasting Sa 3+Metallization +A'8.04PU	RAL 7044	Silk Grey
WATER PROOF COVER HATCHWAY PIER LEFT BANK	CSI-C5M:galvanization +A'7.13PU	RAL 7044	Silk Grey
RAILING ON THE STAIR IN THE BRIDGE BASEMENT.	CSI-C5M:galvanization +A'7.13PU	RAL 7044	Silk Grey
CONNECTION PROFILES FOR WOOD ON THE CONCRETE.	CSI-C5M:galvanization +A'7.13PU	RAL 7044	Silk Grey

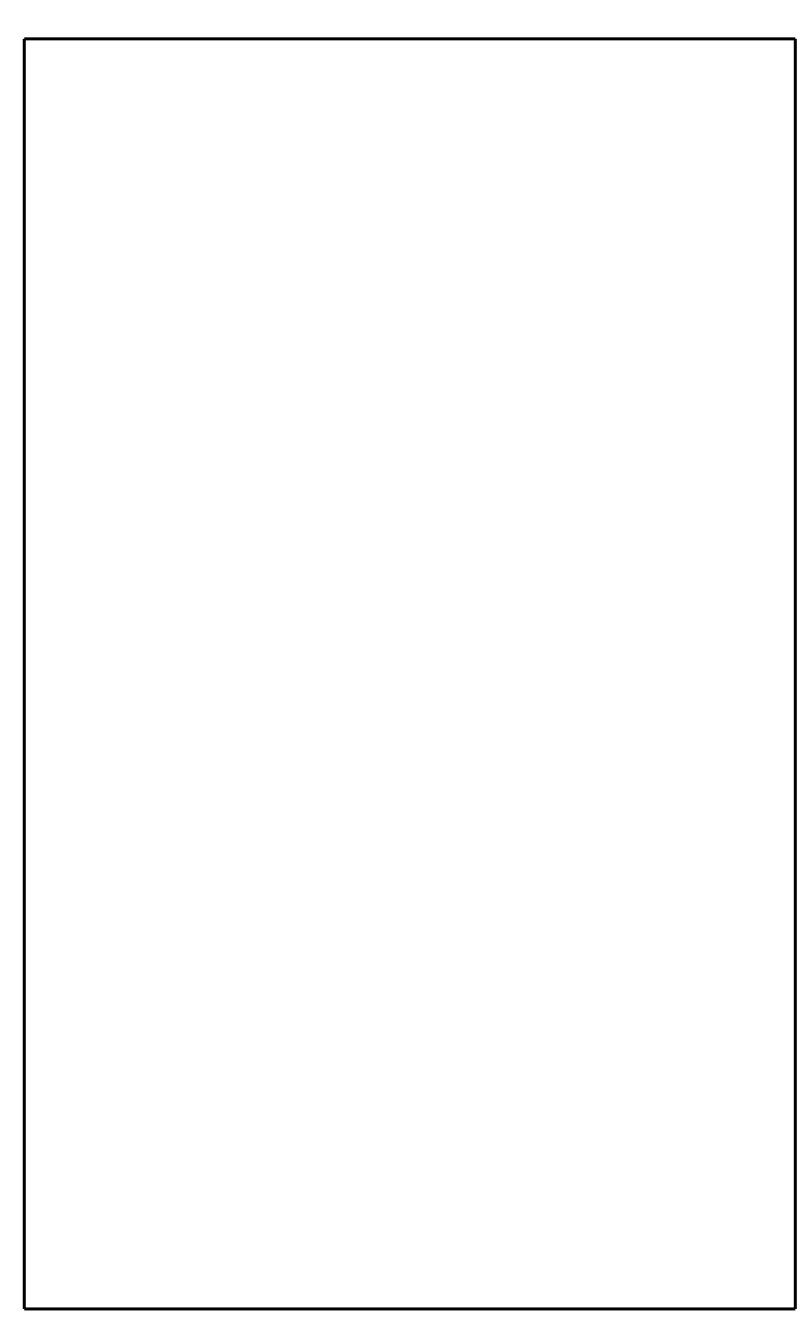
STEEL CONSTRUCTIONS:-

- STEEL GRADE S355 (UNLESS STATED OTHERWISE)
- ELEMENT THICKNESS T < 4MM: S355 J2 + N
- ELEMENT THICKNESS T < 4MM: S355 K2 + N
- ELEMENT THICKNESS T < 4MM: S355 ML
- (\*\*\* FOR PLATES UP TO AND INCLUDING 40 MM, J2 + N
- (\*\*\* FOR PLATES ABOVE 40MM K2+N
- CORROSION-RESISTANT STEEL (UNLESS STATED OTHERWISE)
- NOT WELDED: X5CRNiMO17-12-2 (1.4401)
- WELDED: CHOICE OF:
  - i) X2 CRNi MO17-12-2 (1.4404)
  - ii) X2 CRNiMON 22-5-3 (1.4462)
  - iii) X6 CRNiMO17-12-2 (1.4717)
  - iv) X6CRNiMONB17-12-2 (1.4500)
- STEEL GRADE OF STUDS : S235 J2G3+C450
- WELDING:
  - ALL WELDS ARE PERFORMED CONTINUOUSLY
  - JOINTS WITH FULL PENETRATION WELDS, THE WELD DETAILS CAN BE CONSULTED FROM WELD CATALOG.
  - WELD DETAILS REFERENCE WILL BE MENTIONED ON THE DRAWINGS.
  - JOINTS WITH FILLET WELDS, THE FOLLOWING WELDS WILL BE APPLIED AS MINIMUM:
    - i) DOUBLE SIDED FILLET WELDS WITH A=5MM UNLESS INDICATED OTHERWISE.
    - ii) FOR NON-DOUBLE SIDED ACCESSIBLY PLATES OF TUBULAR PROFILES Y-SEAM WITH S=10MM OR
    - SINGLE SIDED CORNER WELD WITH S=10MM, UNLESS INDICATED OTHERWISE.
- BOLTS
  - BOLTS GRADE 8.8 (UNLESS STATED OTHERWISE)
  - ALL NON-PRESTENSIONED BOLTS SETS ARE SECURED COUNTER NUTS EN ISO-4035
- ALL STEEL WORKS ARE TO COMPLY WITH EN1090
  - BRIDGE: EXC 3
  - GUIDING SYSTEM: EXC2

EQUIPMENT AND ACCESSORIES:

- LOCKING PLATES: STAINLESS STEEL (X2CRNiMO17-12-2)
- EDGE PROFILES BRIDGE DECK: STAINLESS STEEL (X2CRNiMO17-12-2)
- HANDRAILS: CLASS I HARDWOOD
- RUB BARS: AZOBE
  - FIXING PROFILES FOR RUB BARS - S355J0
  - DRAINAGE OPENINGS Ø30 MM TO BE PROVIDED FOR DRAINAGE OF ENCLOSED HORIZONTAL PLATE OR PROFILE PARTS
- LADDERS: S235JR
- FASTENERS FOR EQUIPMENT AND ATTACHMENTS: SEE SPECIFICATIONS.
- ALL NON-PRESTRESSED BOLT SETS SUBJECT TO CHANGING LOADS, COUNTER NUTS ARE SECURED AGAINST LOOSENING
- WELDING: CONTINUOUS MINIMUM DOUBLE ANGLE WELD WITH A = 5, UNLESS INDICATED OTHERWISE

(REFER E2-E5,E7 FOR BRIDGES AND DETAILS)  
(REFER E6,DWG FOR GUIDERAIL)



PLANNING GA-1

Projectnumber: 16000

GA-1

LEIE

Bouw van een beweegbare fiets- en voetgangersbrug over de Leie

**BESTAANDE TOESTAND**

OVERZICHTSPLAN